

Dette kartblad er nødvendigvis ikke oppdatert og alt bruk skjer på eget ansvar.

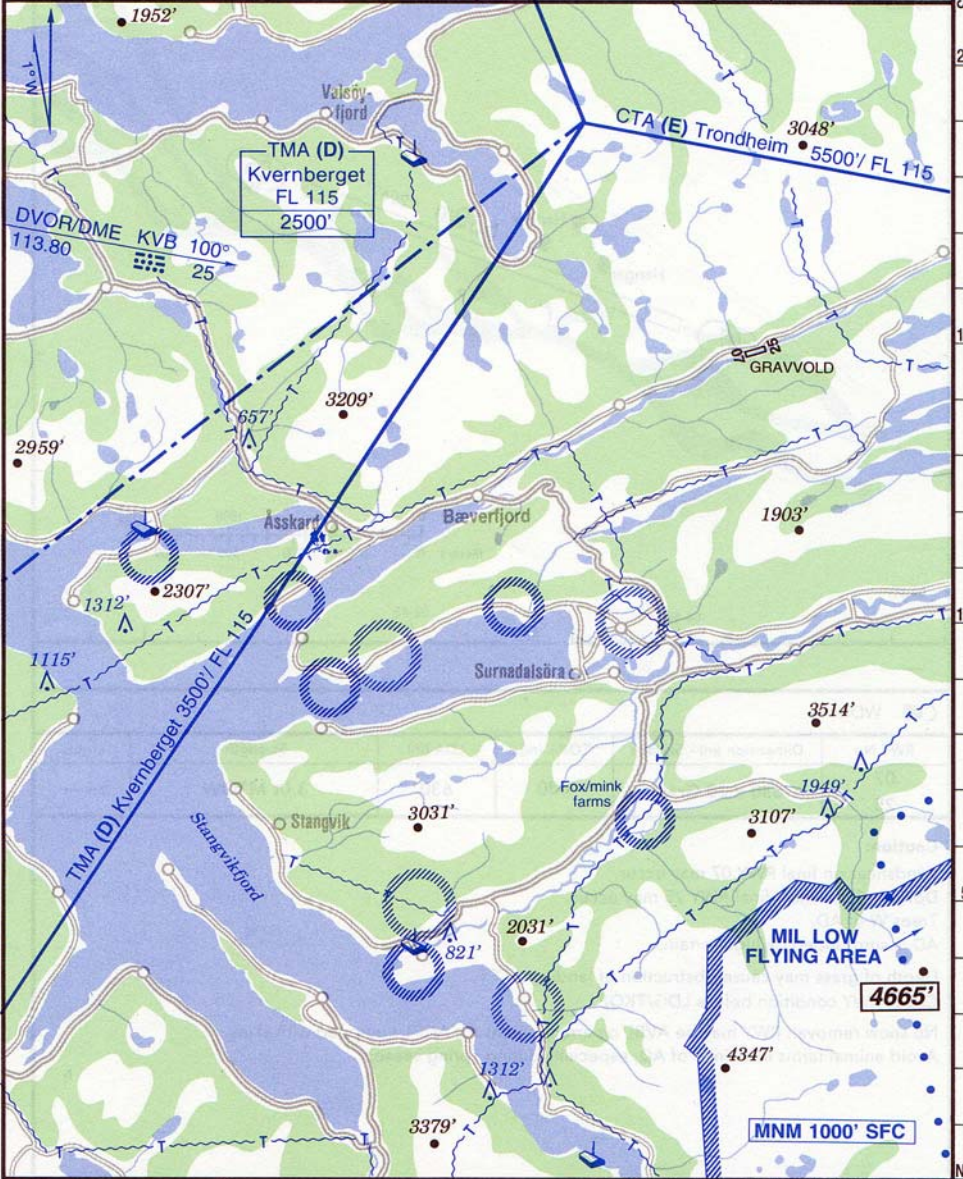
ELEV 150' / 46 m

N63 03.3
E008 42.9

28 NM E Kristiansund

(Club)
GRAVVOLD **123.50** (nor, en, blind transmission)

RWY	ILS	RWY	ILS



SCALE 1 : 250 000

20

15

10

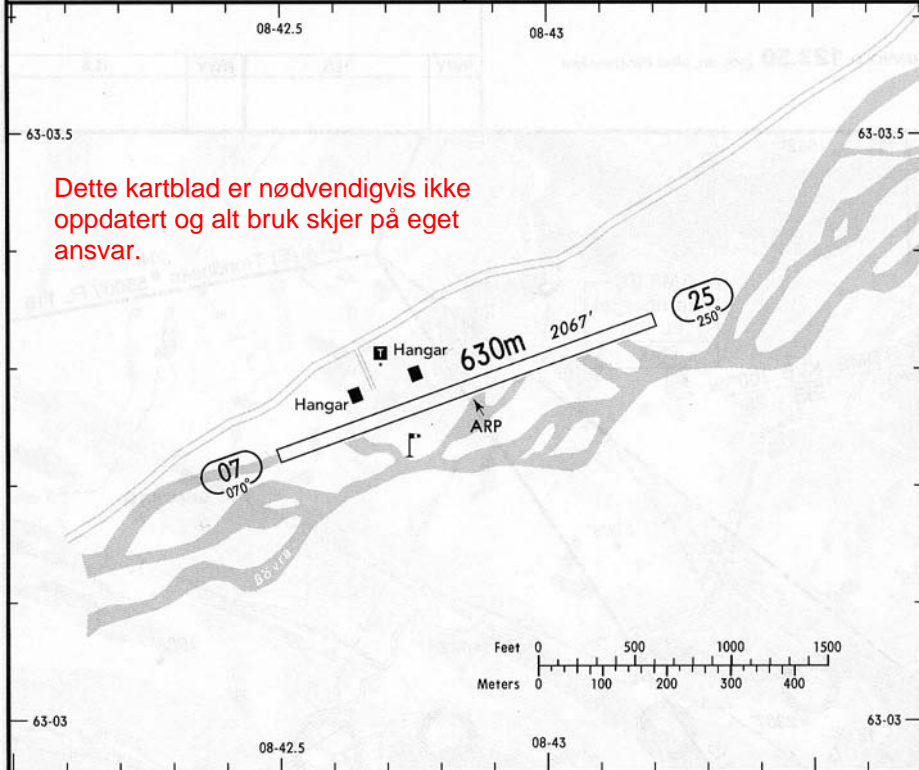
5

NM

CHANGES: 1st Edition.

(FIS)

TRONDHEIM CONTROL 125.70



Dette kartblad er nødvendigvis ikke oppdatert og alt bruk skjer på eget ansvar.

WDI.

RWY No	Dimension (m) - Surface	TORA (m)	LDA (m)	Strength	Lights
07	630 x 20 Grass	630	630	3.0t MTOW	—
25					

Caution:

Windshear on final RWY 07 may occur.

Downdraft on short final RWY 25 may occur.

Trees W of AD.

AD is surrounded by high terrain.

Depth of grass may cause obstruction of landing ACFT.

Check RWY condition before LDG/TKOF.

No snow removal: RWY may be AVBL on arrangement for ACFT equipped with skis.

Avoid animal farms in vicinity of AD, especially during spring season.